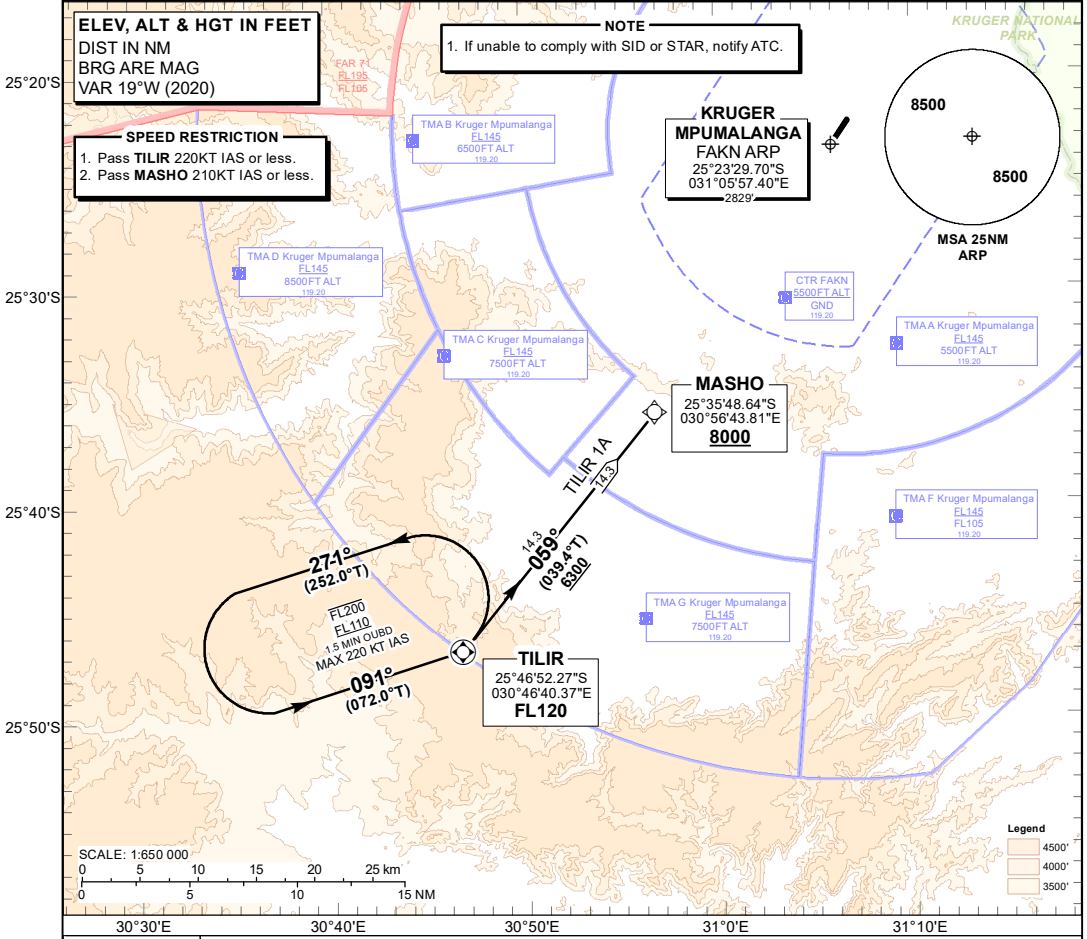


**STANDARD ARRIVAL  
CHART - ICAO  
INSTRUMENT  
(STAR)**

TRANSITIONAL ALTITUDE  
**9000'**  
TRANSITIONAL LEVEL  
**ATC**

KRUGER APP: 119.20  
TWR: 119.20  
APN: 122.65  
LOWVELD: 119.00  
ACC NE: 134.40

**KRUGER MPUMALANGA  
INTL  
RNAV (GNSS) RWY 05  
TILIR 1A**



**TILIR 1A:  
RWY 05**

Leave **TILIR** for **MASHO**. At **MASHO**, continue on the RNAV (GNSS) APCH RWY 05 or ILS APCH RWY 05.

**COMMUNICATION FAILURE PROCEDURE (Squawk 7600)**

**Before TILIR:** Proceed to **TILIR** and enter the **TILIR** RNAV (GNSS) hold. Hold for 5 minutes at last assigned flight level (at or above FL110). Descend to FL120. Leave **TILIR** on the "After **TILIR**" Communication Failure Procedure.

**After TILIR:** Continue on the **TILIR 1A** RNAV (GNSS) STAR. At **MASHO** continue on the RNAV (GNSS) APCH RWY 05 Communication Failure Procedure.

CHANGE: NEW Procedure